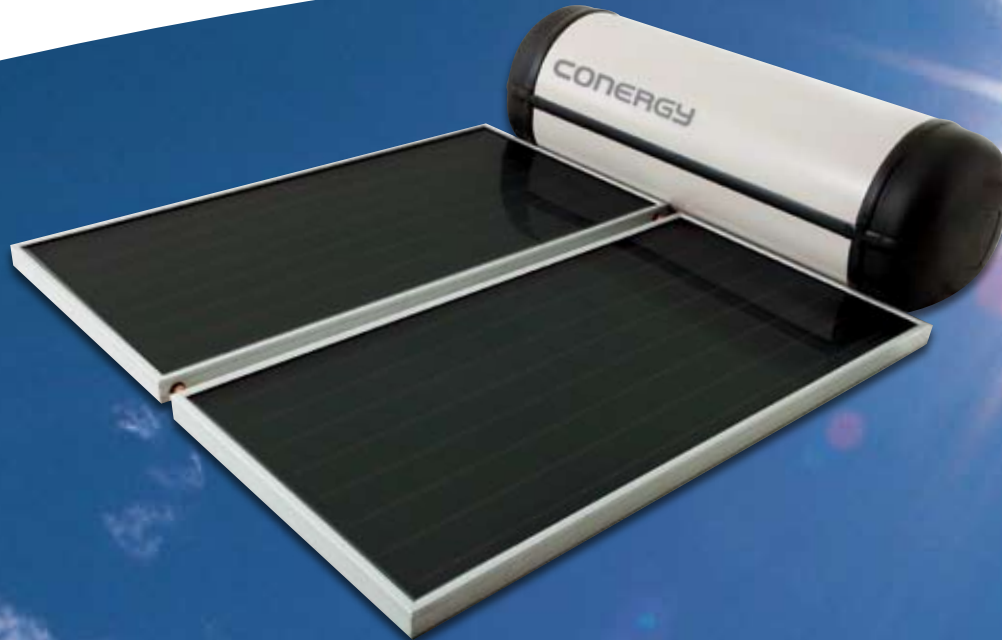


# Solar - The Smart Choice for Hot Water



CONERGY

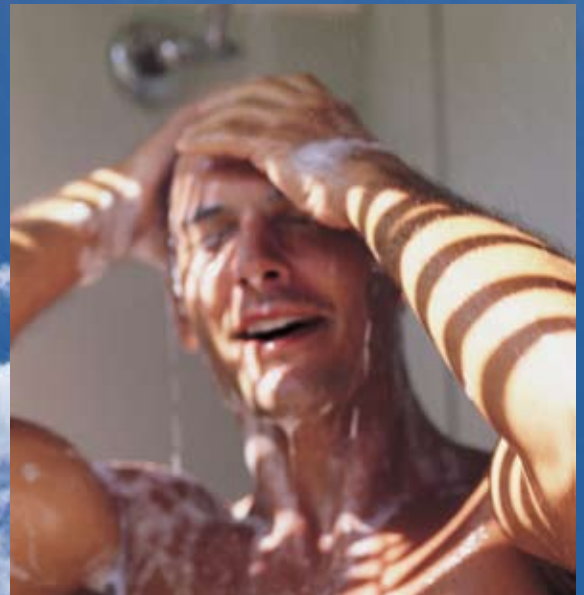
Conergy TS Series – Closed



## Why Solar?

The benefits of solar heating are well known – energy from the sun costs nothing, and you can obtain as much as 90% of your hot water requirements for free! And while you're reducing your power bill, you're helping the environment.

That's why Conergy TS hot water systems are the smart choice, with the highest standards in water heating performance. Superior design, technology and materials ensure the very best in efficiency, slashing your heating costs while you enjoy steaming hot water, all year round.



## The Conergy Benefits

- | Up to 90% of your hot water for free from the sun
- | Speedy installation
- | Hot water in all weather conditions
- | Save up to 3.4 tonnes of CO<sub>2</sub> emissions per year
- | Generous rebates available to approved applicants
- | Long life in any environment
- | Extensive warranty options

## Conergy TS Series – Closed

The Conergy TS Series – Closed is a roof mounted closed circuit hot water system designed for frost prone and poor water quality areas. It comes with a choice of 2 different collectors to provide highly efficient service in all solar radiation areas.

## Tanks

- Choice of tank sizes
- Vitreous enamel lined steel with sacrificial anode for long life even in hard water areas
- Durable Colorbond® and Polypropylene casing
- Robust construction with high density thermal insulation



## Collectors

- Collector models for high and low solar radiation areas
- Toughened glass and durable copper waterway tubes
- EPDM rubber seals ensure durability and reliability in extreme climatic conditions
- Black chrome surface on copper substrate guarantees maximum efficiency (E20BC model)
- Selective surface guarantees maximum performance in high solar radiation areas (E20SB model)



## Our Model Range

Model	TS 1802 E20SB Closed	TS 1802 F20LC Closed	TS 1802 E20BC Closed	TS 3004 E20SB Closed	TS 3004 F20LC Closed	TS 3004 E20BC Closed
Storage capacity (L)	180	180	180	300	300	300
Boost capacity (electric/gas) (available in LPG & NG)	90L/26L - min	90L/26L - min	90L/26L - min	150L/26L - min	150L/26L - min	150L/26L - min
Storage tank material	Vitreous enamel lined low carbon steel					
Storage tank insulation	High density polyurethane					
Tank weight, empty (kg)	54	54	54	87	87	87
Tank weight, full (kg)	229	229	229	385	385	385
Tank size (W x H x L/mm)	624 x 589 x 1237			624 x 589 x 2047		
Booster element rating 220/250 V (KW)	2.4*	2.4*	2.4*	2.4*	2.4*	2.4*
Collector model	E20SB	F20LC	E20BC	E20SB	F20LC	E20BC
Number of collectors	1	1	1	2**	2**	2**
Collector size (H x W x D/mm)	2000 x 1000 x 80 (E20SB, E20BC)			1938 x 1025 x 80 (F20LC)		
Total collector area (m <sup>2</sup> )	2.00	1.98	2.00	4.00	3.96	4.00
Collector weight (empty) kg	30	42	30	30	42	30
Collector weight (full) kg	32	44	32	32	44	32
Collector case material	Aluminium	Zincalume	Aluminium	Aluminium	Zincalume	Aluminium
Solar energy transfer medium	Solar Fluid					

\* Other element ratings available upon request

\*\* Also available with 3 collectors

## Product Features

The Conergy TS closed circuit systems are suitable for single and multiple installations. They perform well in all water quality areas and are especially designed to withstand extreme weather conditions including frost and prolonged heat. A special solar fluid prevents collector freezing.

- Quality design & stylish appearance
- No moving parts – low maintenance
- Electric boosting with all systems (gas available as option)
- Flat and pitched roof mounting systems available
- Choice of collectors provides exceptional performance in all solar radiation areas
- Open circuit system available
- Certified – Australian Standard 2712

For solar hot water enquires contact your local distributor on 1300 724 516

For more information on Conergy products including solar electric and wind power, please visit us online: [www.conergy.com.au](http://www.conergy.com.au)

Subject to technical modifications without notice.  
2007 © Conergy



Available from your local distributor: