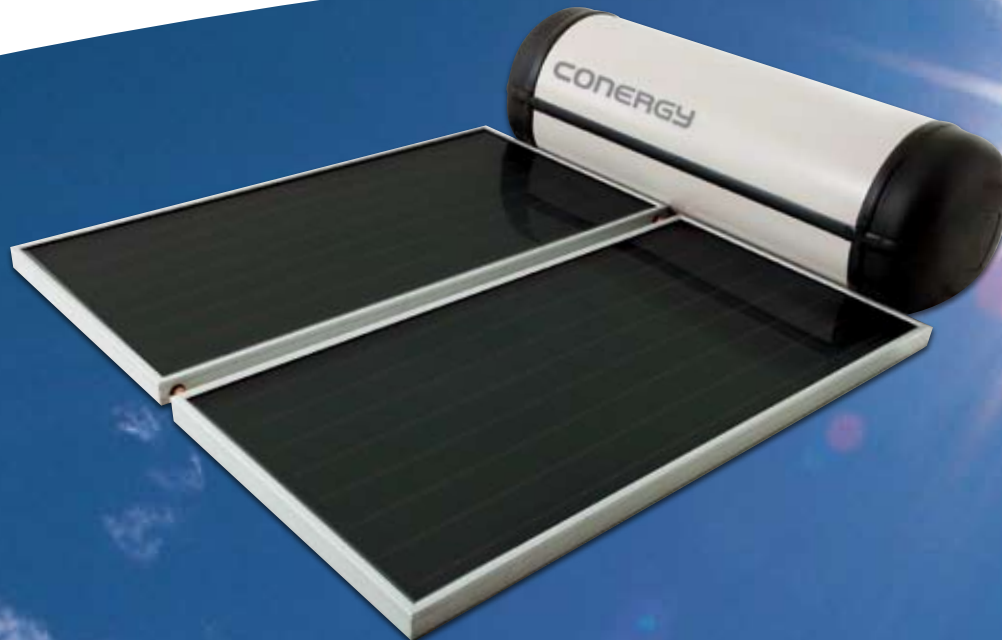


Solar - The Smart Choice for Hot Water



CONERGY

Conergy TS Series – Open



Why Solar?

The benefits of solar heating are well known – energy from the sun costs nothing, and you can obtain as much as 90% of your hot water requirements for free! And while you're reducing your power bill, you're helping the environment.

That's why Conergy TS hot water systems are the smart choice, with the highest standards in water heating performance. Superior design, technology and materials ensure the very best in efficiency, slashing your heating costs while you enjoy steaming hot water, all year round.



The Conergy Benefits

- | Up to 90% of your hot water for free from the sun
- | Speedy installation
- | Hot water in all weather conditions
- | Save up to 3.4 tonnes of CO₂ emissions per year
- | Generous rebates available to approved applicants
- | Long life in any environment
- | Extensive warranty options

Conergy TS Series – Open

The Conergy TS Series – Open is a roof mounted open circuit hot water system designed for frost-free regions. It comes with a choice of 2 different collectors to provide highly efficient service in all solar radiation areas.

Tanks

- Choice of tank sizes
- Vitreous enamel lined steel with sacrificial anode for long life even in hard water areas
- Durable Colorbond® and Polypropylene casing
- Robust construction with high density thermal insulation

Collectors

- Collector models for high and low solar radiation areas
- Toughened glass and durable copper waterway tubes
- EPDM rubber seals ensure durability and reliability in extreme climatic conditions
- Black chrome surface on copper substrate guarantees maximum efficiency (E20BC model)
- Solar lacquer surface guarantees maximum performance in high solar radiation areas (F20LC model)



Our Model Range

Model	TS 1802 E20SB Open	TS 1802 F20LC Open	TS 1802 E20BC Open	TS 3004 E20SB Open	TS 3004 F20LC Open	TS 3004 E20BC Open
Storage capacity (L)	180	180	180	300	300	300
Boost capacity (electric/gas) (available in LPG & NG)	90L/26L - min	90L/26L - min	90L/26L - min	150L/26L - min	150L/26L - min	150L/26L - min
Storage tank material	Vitreous enamel lined low carbon steel					
Storage tank insulation	High density polyurethane					
Tank weight, empty (kg)	54	54	54	87	87	87
Tank weight, full (kg)	229	229	229	385	385	385
Tank size (W x H x L/mm)	624 x 589 x 1237			624 x 589 x 2047		
Booster element rating 220/250 V (KW)	2.4*	2.4*	2.4*	2.4*	2.4*	2.4*
Collector model	E20SB	F20LC	E20BC	E20SB	F20LC	E20BC
Number of collectors	1	1	1	2**	2**	2**
Collector size (H x W x D/mm)	2000 x 1000 x 80 (E20SB, E20BC)			1938 x 1025 x 80 (F20LC)		
Total collector area (m ²)	2.00	1.98	2.00	4.00	3.96	4.00
Collector weight (empty) kg	30	42	30	30	42	30
Collector weight (full) kg	32	44	32	32	44	32
Collector case material	Aluminium	Zincalume	Aluminium	Aluminium	Zincalume	Aluminium
Solar energy transfer medium	Water					

Product Features

The Conergy TS open circuit systems are suitable for single and multiple installations.

- Quality design
- Stylish appearance
- No moving parts – low maintenance
- Electric boosting with all systems (gas available as option)
- Flat and pitched roof mounting systems available
- Choice of collectors provides exceptional performance in all solar radiation areas
- Closed circuit system available
- Certified – Australian Standard 2712

* Other element ratings available upon request

** Also available with 3 collectors

For more information on Conergy products including solar electric and wind power, please visit us online:
www.solarharness.com.au



Available from your local distributor:



Contact Solar Harness:
Phone: 08 9368 8755
Fax: 08 9368 8756
Email: sales@solarharness.com.au